



# RIIHIMÄKI PUBLIC LIBRARY

*At Home in the Library*



# WELCOME TO THE LIBRARY!

You can register for our services on your first visit if you have an official ID card with you. You get the Library Card immediately and it is valid in all RATAMO Libraries.

RATAMO Libraries include the Libraries of Hausjärvi, Riihimäki, Hyvinkää and Nurmijärvi Districts.

## FOR YOUR PERUSAL THE LIBRARY COLLECTION COMPRISES OF

- ◆ 195 000 Books
- ◆ 7 800 Items of Sheet Music
- ◆ 13 000 Music Recordings

We also have film recordings, periodicals and newspapers - some in foreign languages, too.

Our annual Circulation is about 590 000.

The annual Number of Visitors is about 320 500.

We carry some foreign language material in our Library and try to provide service for foreigners as well.



“Stairs of Experience”  
Created in 1986 by  
Salme Karvanen.

## THROUGH OUR ON-LINE SERVICE YOU CAN

- ◆ Renew your loans
- ◆ Place reservations on material
- ◆ Inform us if your registration information has changed
- ◆ Choose the way we send you a notification of the items you have reserved; the options are text message, email or regular mail.

You need your Library Card Number and a PIN Code if you want to reserve items or renew your loans through our On-Line Service. Both numbers you can get at the Library. You need the Card and the PIN code when you take out material via the Lending Automat, too.



## OUR SERVICES INCLUDE

- ◆ Giving out books and other material, accepting material as returns from all RATAMO Libraries; you can also use automats for this.
- ◆ Reserving material that is out on loan
- ◆ Reading room, where you can read periodicals and newspapers
- ◆ Possibility to use computers on the premises
- ◆ Local History Collection which contains books and resources with emphasis on local history and people.
- ◆ Reference Service that helps you find the subjects and materials you are looking for and handles the Interlibrary loans.
- ◆ Home Delivery Service for the elderly or otherwise disabled
- ◆ Booktalks for both adults and children
- ◆ Guided tours for school children and other groups
- ◆ Book Selections for classes and kindergarten groups
- ◆ Reading Diplomas from first to 6th graders.
- ◆ Regular Story Times at the children's section

Some of our services carry a small fee e.g. taking copies, prints or reserving material.

For more information on all our services please visit the Library.

## WE ALSO OFFER YOU THE OPPORTUNITY TO

- ◆ Read microfilms on the premises
- ◆ Take copies of materials either your self or as a service
- ◆ Reserve a piano for your use
- ◆ Watch our DVDs in the library
- ◆ Societies and also private individuals can reserve the Samuli Paronen room for meetings and exhibitions.
- ◆ Small scale exhibitions can be arranged in the display cases of both Adult and Children's sections.
- ◆ We also arrange Events and Theme Days for the general public in the Library.



## FLOOR PLAN

1/2010

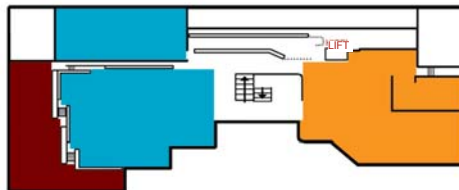
### Lower floor



- Music section
- Reading room
- Samuli Paronen room

The library occupies 2500m<sup>2</sup> on two floors. The new building was designed by Arkkitehtitoimisto Osmo Lappo and was officially opened in 1986.

### Upper floor



- Fiction
- Non-fiction
- Children and Young people section

There is a lift to the upper floor and prams for small children at the entrance hall.

### WELCOME TO THE LIBRARY!

Our people are at your service.

### You can reach us through the phone

Service Desk	(019) 758 4681
Reference Desk	(019) 758 4678
Children's Section	(019) 758 4687
Music Section	(019) 758 4690
Head Librarian	(019) 758 4675

### You can also reach us through email

[kirjasto@riihimaki.fi](mailto:kirjasto@riihimaki.fi)  
for Music Section: [musa@riihimaki.fi](mailto:musa@riihimaki.fi)  
or Children's Section:  
[kirjasto.lastenosasto@riihimaki.fi](mailto:kirjasto.lastenosasto@riihimaki.fi)

### OUR OPENING HOURS ARE:

Monday-Friday	11.00-19.00
Saturday	10.00-15.00
The day before a Public holiday	10.00-16.00

### SUMMER OPENING HOURS:

Monday-Thursday	11.00-19.00
Friday	11.00-17.00
Saturday	closed

The reading room opens at 9.00 on the days the library is open.

You can find out website at  
[www.riihimaki.fi/kirjasto](http://www.riihimaki.fi/kirjasto)

RIIHIMÄKI PUBLIC LIBRARY

KAUPPAKATU 16, 11100 RIIHIMÄKI